

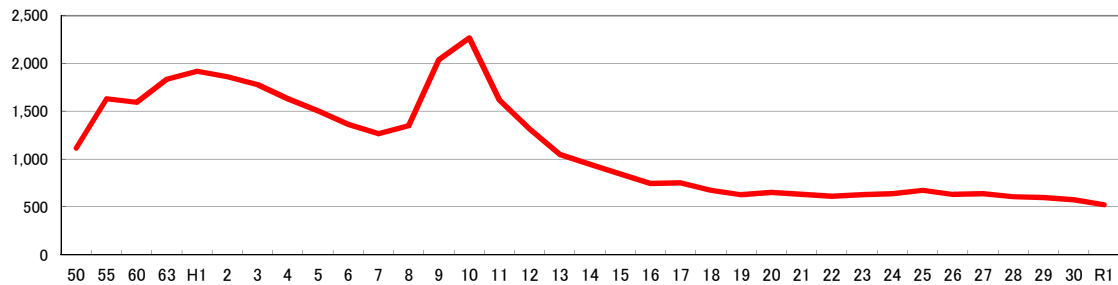
ワイン事業

1. ワインの販売量・販売額

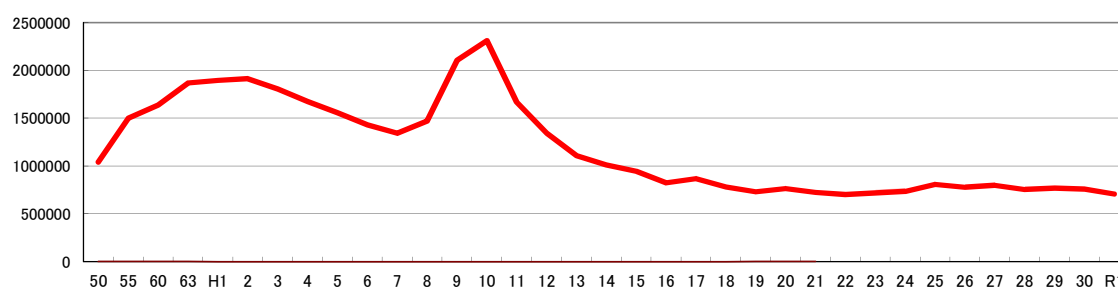
単位:kl、千円(池田町ブドウ・ブドウ酒研究所)

| 年次 | 合計 | | 果実酒 | | 甘味果実酒・リキュール | | | | ブランド | | | | | |
|----|---------|-----------|----------|-------|-------------|-------|------|------|--------|------|------|------|---------|-------|
| | 販売量 | 販売額 | 販売量 | 販売額 | 販売量 | 販売額 | 販売量 | 販売額 | 販売量 | 販売額 | 販売量 | 販売額 | | |
| 50 | 1,117.8 | 1,043,018 | 1,091.9 | 97.7% | 1,001,995 | 96.1% | 16.3 | 1.5% | 11,825 | 1.1% | 9.6 | 0.9% | 29,198 | 2.8% |
| 55 | 1,631.0 | 1,500,388 | 1,587.5 | 97.3% | 1,401,499 | 93.4% | 24.2 | 1.5% | 24,558 | 1.6% | 19.3 | 1.2% | 74,331 | 5.0% |
| 60 | 1,593.5 | 1,637,603 | 1,495.1 | 93.8% | 1,446,573 | 88.3% | 33.5 | 2.1% | 42,831 | 2.6% | 64.9 | 4.1% | 148,199 | 9.0% |
| 63 | 1,833.8 | 1,867,733 | 1,762.3 | 96.1% | 1,698,916 | 91.0% | 36.5 | 2.0% | 47,324 | 2.5% | 35.0 | 1.9% | 121,493 | 6.5% |
| H1 | 1,919.2 | 1,895,699 | 1,852.0 | 96.5% | 1,746,103 | 92.1% | 34.8 | 1.8% | 37,485 | 2.0% | 32.4 | 1.7% | 112,111 | 5.9% |
| 2 | 1,861.7 | 1,911,146 | 1,798.3 | 96.6% | 1,773,030 | 92.8% | 36.9 | 2.0% | 39,839 | 2.1% | 26.5 | 1.4% | 98,277 | 5.1% |
| 3 | 1,778.0 | 1,805,512 | 1,728.8 | 97.2% | 1,695,599 | 93.9% | 29.0 | 1.6% | 33,899 | 1.9% | 20.2 | 1.1% | 76,014 | 4.2% |
| 4 | 1,630.1 | 1,674,351 | 1,589.3 | 97.5% | 1,579,406 | 94.3% | 22.0 | 1.3% | 26,938 | 1.6% | 18.8 | 1.2% | 68,007 | 4.1% |
| 5 | 1,504.3 | 1,557,556 | 1,473.7 | 98.0% | 1,486,957 | 95.5% | 19.2 | 1.3% | 25,975 | 1.7% | 11.4 | 0.8% | 44,624 | 2.9% |
| 6 | 1,365.3 | 1,429,991 | 1,340.2 | 98.2% | 1,372,591 | 96.0% | 15.2 | 1.1% | 18,466 | 1.3% | 9.9 | 0.7% | 38,934 | 2.7% |
| 7 | 1,268.0 | 1,343,431 | 1,240.6 | 97.8% | 1,286,336 | 95.8% | 19.4 | 1.5% | 23,356 | 1.7% | 8.0 | 0.6% | 33,739 | 2.5% |
| 8 | 1,351.4 | 1,468,839 | 1,317.0 | 97.5% | 1,403,463 | 95.5% | 27.4 | 2.0% | 35,328 | 2.4% | 7.0 | 0.5% | 30,048 | 2.0% |
| 9 | 2,039.7 | 2,106,031 | 2,016.2 | 98.8% | 2,060,970 | 97.9% | 17.5 | 0.9% | 21,077 | 1.0% | 6.0 | 0.3% | 23,984 | 1.1% |
| 10 | 2,265.9 | 2,309,423 | 2,239.8 | 98.8% | 2,255,569 | 97.7% | 17.6 | 0.8% | 23,730 | 1.0% | 8.5 | 0.4% | 30,124 | 1.3% |
| 11 | 1,617.4 | 1,666,413 | 1,595.70 | 98.7% | 1,632,690 | 98.0% | 16.6 | 1.0% | 17,618 | 1.1% | 5.1 | 0.3% | 16,105 | 1.0% |
| 12 | 1,314.7 | 1,343,873 | 1,299.00 | 98.8% | 1,316,371 | 98.0% | 10.8 | 0.8% | 12,527 | 0.9% | 4.9 | 0.4% | 14,975 | 1.1% |
| 13 | 1,049.8 | 1,107,785 | 1,036.20 | 98.7% | 1,082,736 | 97.7% | 8.9 | 0.8% | 10,786 | 1.0% | 4.7 | 0.4% | 14,263 | 1.3% |
| 14 | 944.8 | 1,012,298 | 931.1 | 98.5% | 979,292 | 96.7% | 8 | 0.8% | 9,091 | 0.9% | 5.7 | 0.6% | 23,915 | 2.4% |
| 15 | 846.8 | 945,882 | 834.5 | 98.5% | 922,433 | 97.5% | 7.1 | 0.8% | 7,884 | 0.8% | 5.2 | 0.6% | 15,565 | 1.6% |
| 16 | 744.9 | 823,429 | 729.4 | 97.9% | 792,643 | 96.3% | 11.2 | 1.5% | 14,496 | 1.8% | 4.3 | 0.6% | 16,290 | 2.0% |
| 17 | 751.3 | 866,765 | 728.3 | 96.9% | 826,030 | 95.3% | 18.6 | 2.5% | 23,466 | 2.7% | 4.4 | 0.6% | 17,269 | 2.0% |
| 18 | 675.9 | 782,537 | 656.4 | 97.1% | 743,176 | 95.0% | 15.1 | 2.2% | 22,098 | 2.8% | 4.4 | 0.7% | 17,263 | 2.2% |
| 19 | 627.5 | 729,787 | 613.2 | 97.7% | 691,204 | 94.7% | 9.1 | 1.5% | 14,612 | 2.0% | 5.2 | 0.8% | 23,971 | 3.3% |
| 20 | 651.2 | 763,799 | 637.5 | 97.9% | 717,498 | 93.9% | 9.0 | 1.4% | 26,374 | 3.5% | 4.7 | 0.7% | 19,927 | 2.6% |
| 21 | 630.5 | 723,962 | 617.8 | 98.0% | 693,185 | 95.7% | 8.0 | 1.3% | 12,656 | 1.7% | 4.7 | 0.7% | 18,121 | 2.5% |
| 22 | 611.7 | 700,206 | 598.5 | 97.8% | 667,223 | 95.3% | 8.3 | 1.4% | 15,360 | 2.2% | 4.9 | 0.8% | 17,623 | 2.5% |
| 23 | 627.7 | 719,079 | 610.3 | 97.2% | 681,121 | 94.7% | 11.9 | 1.9% | 17,436 | 2.4% | 5.5 | 0.9% | 20,522 | 2.9% |
| 24 | 637.1 | 732,796 | 620.9 | 97.5% | 696,483 | 95.0% | 10.6 | 1.7% | 15,531 | 2.1% | 5.6 | 0.9% | 20,782 | 2.8% |
| 25 | 673.7 | 807,852 | 655.7 | 97.3% | 758,256 | 93.9% | 10.1 | 1.5% | 14,853 | 1.8% | 7.9 | 1.2% | 34,743 | 4.3% |
| 26 | 632.4 | 777,596 | 612.4 | 96.8% | 731,526 | 94.1% | 12.9 | 2.0% | 18,026 | 2.3% | 7.1 | 1.1% | 28,044 | 3.6% |
| 27 | 637.9 | 799,639 | 618.1 | 96.9% | 751,852 | 94.0% | 13.6 | 2.1% | 19,155 | 2.4% | 6.2 | 1.0% | 25,632 | 3.2% |
| 28 | 606.7 | 754,523 | 586.4 | 96.7% | 709,018 | 94.0% | 13.7 | 2.3% | 19,405 | 2.6% | 6.6 | 1.1% | 26,100 | 3.5% |
| 29 | 597.8 | 768,007 | 572.3 | 95.7% | 702,660 | 91.5% | 15.9 | 2.7% | 22,089 | 2.9% | 9.6 | 1.6% | 43,258 | 5.6% |
| 30 | 574.2 | 756,448 | 537.0 | 93.5% | 651,491 | 86.1% | 19.9 | 3.5% | 27,158 | 3.6% | 17.4 | 3.0% | 77,799 | 10.3% |
| R1 | 522.9 | 707,573 | 498.0 | 95.2% | 613,366 | 86.7% | 14.7 | 2.8% | 30,416 | 4.3% | 11.3 | 2.2% | 63,791 | 9.0% |

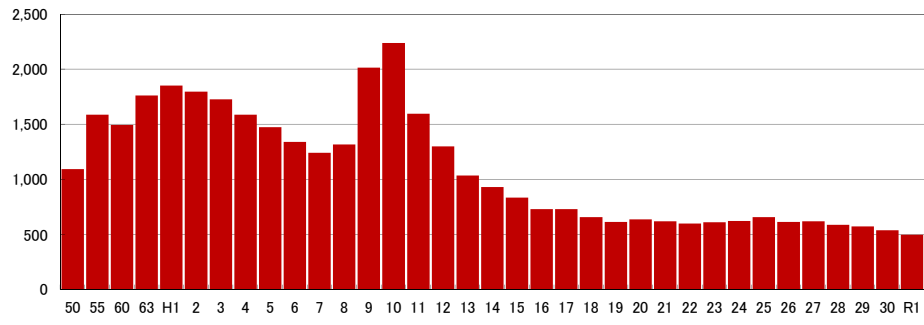
販売量総計年次推移 単位:kl



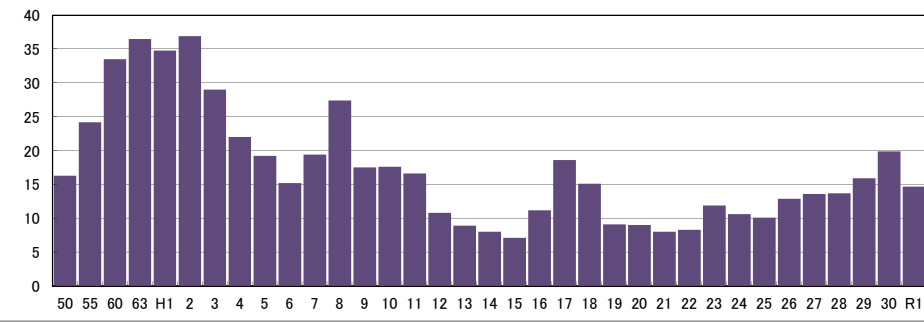
販売額総額年次推移 単位:千円



ワイン(果実酒)販売量 単位:kI



甘味果実酒・リキュール販売量 単位:kI



ブランデー販売量 単位:kI

